

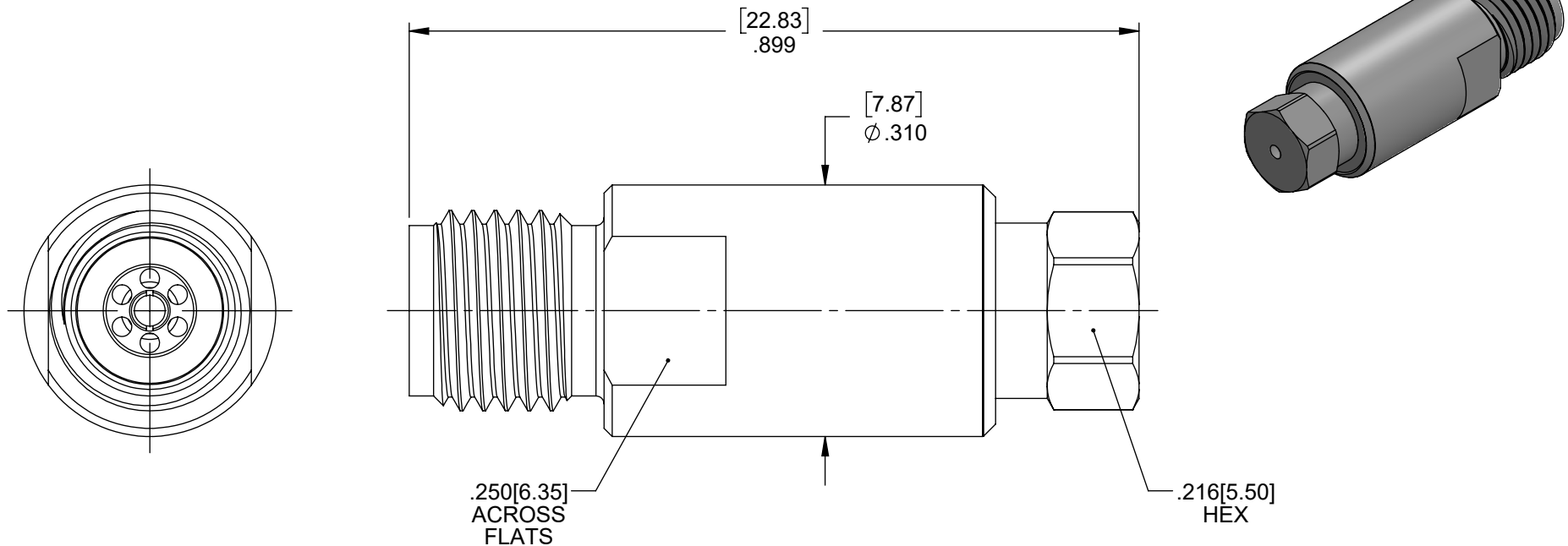
**MATERIAL/FINISH PROPERTIES**

**MATERIAL PROPERTIES:**  
 BODY: STAINLESS STEEL PER ASTM A582 OR EQUIVALENT  
 CONTACT: BERYLLIUM COPPER PER ASTM B196 OR EQUIVALENT  
 INSULATOR: PCTFE (KEL-F) PER ASTM-D-1430-03 OR EQUIVALENT  
 BUSHING: BRASS PER ASTM B16 OR EQUIVALENT

**PLATING PROPERTIES:**  
 BODY: PASSIVATE PER QQ-P-35, TYPEII  
 CONTACT: .000040 MIN. GOLD PER MIL-G-45204 OVER  
           .000050 MIN. NICKEL PER QQ-N-290  
 BUSHING: .000030 MIN. GOLD PER MIL-G-45204 OVER  
           .000050 MIN. NICKEL PER QQ-N-290

**MECHANICAL/ELECTRICAL PROPERTIES**

CONNECTOR MEETS: MIL-STD-348 FIG. 323-2, MIL-PRF-39012  
 CONNECTOR MEETS: RoHS 3 2015/863/EU STANDARDS  
 CONNECTOR DURABILITY: 500 CYCLES MIN.  
 CABLE: .034 SEMI RIGID (NbTi, SS, BeCu, CuNi)  
 ASSEMBLY INSTRUCTION: AI577  
 IMPEDANCE: 50 OHMS NOMINAL  
 FREQUENCY RANGE: DC-40 GHz  
 VOLTAGE RATING: 335 VRMS  
 INSULATION RESISTANCE: 5,000 MEGOHMS



B	ECN 1870	MS	06/13/23
A	NPR 1826E	MS	03/10/21
<b>REV</b>	<b>DESCRIPTION</b>	<b>APPR</b>	<b>DATE</b>

# IntelliConnect

**UNLESS OTHERWISE SPECIFIED**  
 ALL DIMENSIONS ARE REFERENCE  
 X.XXX DIM'S = INCHES \* [X.XX] DIM'S = MILLIMETERS  
 SURFACE FINISH: 63 MICRO MAX.  
 ALL DIAMETERS TO BE CONCENTRIC WITHIN .005 F.I.M.

**TITLE:** 2.92mm STRAIGHT CABLED SOLDERLESS JACK

**MATERIAL & FINISH:** PER TABLE ABOVE

<b>DRAWN BY:</b> JDH	<b>CHECK BY:</b> NB	<b>APPR. BY:</b> MS
<b>DATE:</b> 03/10/21	<b>DATE:</b> 03/10/21	<b>DATE:</b> 03/10/21

<b>CAGE CODE NO:</b> 5N5S5	<b>SCALE:</b> 5:1	<b>SIZE:</b> A	<b>REV:</b> B
----------------------------	-------------------	----------------	---------------

<b>SALES DRAWING</b>	<b>PART NO.</b> 5169-J1NN-652-100P	<b>SHEET</b> 1 OF 1
----------------------	---------------------------------------	------------------------