

SPECIFICATIONS

ELECTRICAL

FREQUENCY RANGE _____ DC - 18 GHz

VSWR
 DC - 4 GHz _____ 1.05:1 MAX
 4 - 8 GHz _____ 1.10:1 MAX
 8 - 12.4 GHz _____ 1.15:1 MAX
 12.4 - 18 GHz _____ 1.20:1 MAX

IMPEDANCE _____ 50 OHMS

TEMPERATURE RANGE _____ 4 KELVIN TO +125°C
 _____ 150°C STORAGE

POWER (AVG) _____ 2 WATTS
 POWER DERATES LINEARLY FROM +45°C TO <10% @+125°C

POWER (PEAK) _____ 500 WATTS
 (<5 μ SEC PW, <1% DUTY CYCLE)

MECHANICAL

INNER CONDUCTOR _____ BERYLLIUM COPPER PER
 ASTM B196 & B197.

OUTER CONDUCTOR _____ STEEL, CORROSION RESISTANT PER
 ASTM A484 & A582, CLASS 303, COND. A.

DIELECTRIC _____ TEFLON PER ASTM D1710.

FINISH

INNER CONDUCTOR _____ GOLD PLATED PER MIL-PRF-39012.

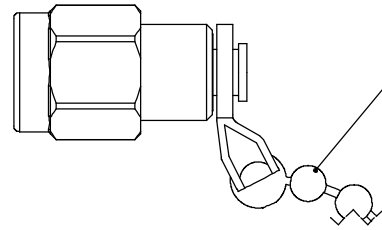
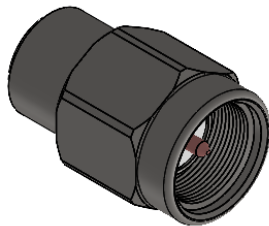
HOUSING/COUPLING NUT FINISH PER SUFFIX (REPLACING -0X IN P/N)
 -00 OUTER CONDUCTOR/NUT GOLD PLATED
 -02 OUTER CONDUCTOR/NUT PASSIVATED SS
 -01 OUTER CONDUCTOR GOLD PLATED, NUT PASSIVATED SS

ADD C FOR 2-2.5" CHAIN ATTACHED

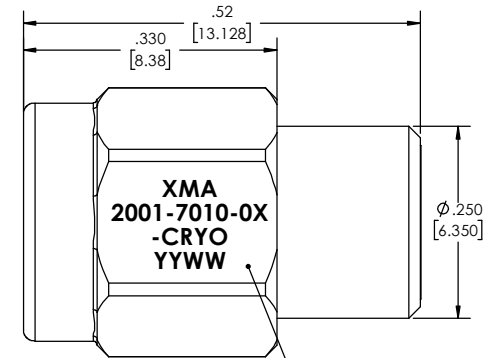
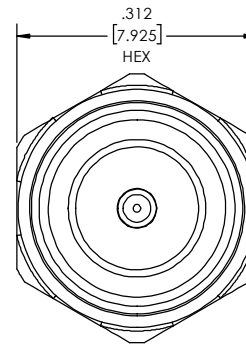
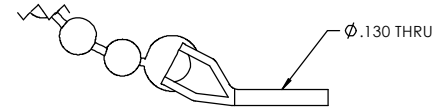
CONNECTOR INTERFACE COMPLIES WITH MIL-PRF-39012 AND MIL-STD-348
 FOR SMA MATING CHARACTERISTICS.

MARKING

PART LOOKS LIKE PRODUCT IMAGE ABOVE.
 PART MARKING ORIENTATION AND FORMAT AS SHOWN.
 MARKING TO BE AS LARGE AS POSSIBLE, CLEAR AND READABLE.
 YYWW EQUALS DATE CODE.



SHOWN WITH OPTIONAL
 #3 BEAD CHAIN STOCK
 SS/INCONEL MATERIAL
 2" - 2.5" LONG
 (SEE NOTE)



REVISIONS				
REV	DESCRIPTION	ECO #	DATE	APPROVED
A	CHANGE OPERATING TEMP TO 4 KELVIN	14-251	10/24/13	T.KUHN
B	ADDED MARKING	15-226	7/20/15	T.KUHN
C	REVISED LENGTH TOL	15-344	12/2/15	T.KUHN
D	INITIAL RELEASE	21-140	10/25/21	CM

QTY.	PART NUMBER	DESCRIPTION	ITEM NO.
	2001-7010-0X-CRYO	TERMINATION, SMA-m, DC-18GHz, 2W	
1	TA-2001-7000-0XYYU-CRYO	ASSEMBLY, TERMINATION, SMA-m, DC-18GHz, 2W, UNMARKED	1

DRAWING PRACTICES PER ANSI Y14.5
 DIMENSIONS ARE IN INCHES AND
 APPLY BEFORE/AFTER PROCESSING

SURFACE
 ROUGHNESS
 FINISH: 63

SEE NOTES

MATERIAL:
 SEE NOTES

NOTE:
 THIS DRAWING INCORPORATES
 THIRD ANGLE PROJECTION.

INTERPRET LAW ANSI Y14.5-1982

UNLESS OTHERWISE SPECIFIED
 TOLERANCES IN:
 DECIMALS INCH (MM)

X" .05" [1.27]
 .XX" .03" [.76]
 .XXX" .010" [.25]

ANGLES ±0°30'
 REMOVE ALL BURRS/SHARP W/
 BREAK / R OF .003" TO .0005"
 UNLESS OTHERWISE NOTED
 DIAS CONCENTRIC <.003 T.I.F.

DO NOT SCALE PRINT

DRAWN DATE
 MCCORMICK 7/20/15

CHECKED DATE
 MCCORMICK 7/20/15

ENG APPR. DATE
 T.KUHN 7/20/15

THESE DRAWINGS AND
 SPECIFICATIONS ARE THE PROPERTY
 OF XMA CORP. OR OMNI SPECTRA
 AND SHALL NOT BE REPRODUCED,
 COPIED NOR USED IN WHOLE OR IN
 PART AS A BASIS FOR THE
 MANUFACTURE OR SALE OF OTHER
 ITEMS WITHOUT THE EXPRESS
 WRITTEN PERMISSION OF XMA CORP.

Phone: 603-222-2256 Fax: 603-222-2259
 7 Perimeter Road, Manchester, NH 03103

TERMINATION, SMA-m, DC-18GHz, 2W

SIZE	CAGE CODE	DRAWING NUMBER	REV
C	3HT76	2001-7010-0X-CRYO	D

SCALE PLATED AREA 50 IN SHEET 1 OF 1